



# B1013 SPECIFICATIONS

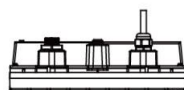
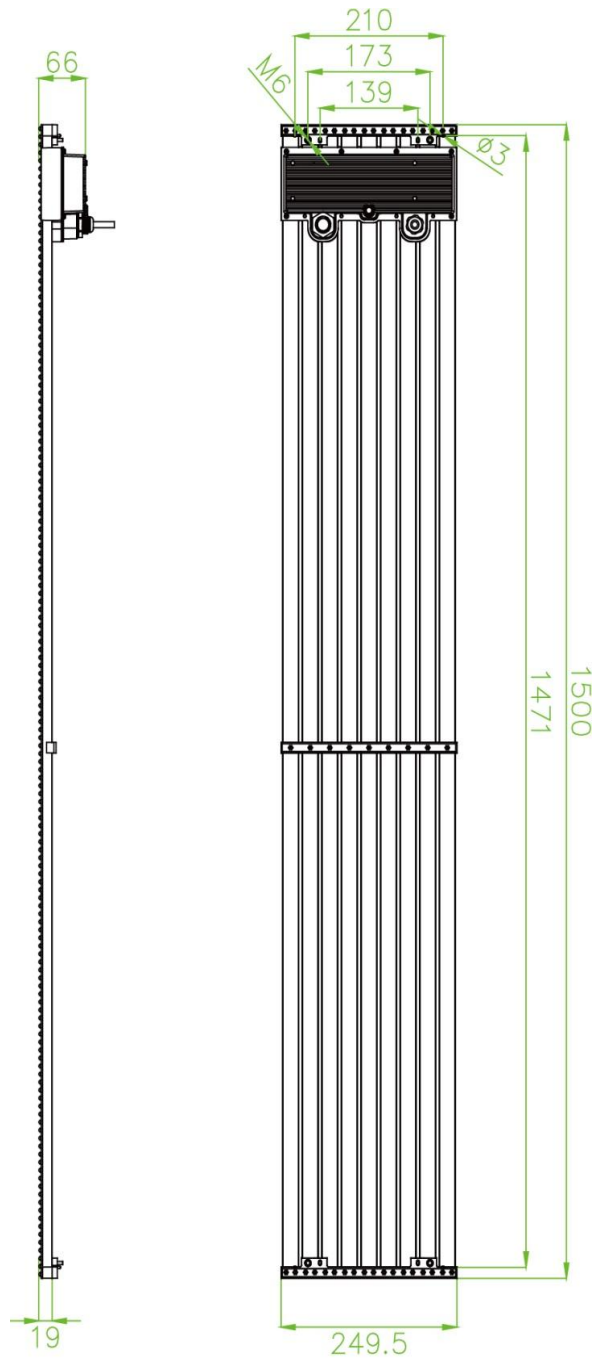
Versions: V20180906

Parameter		Value
<b>Physical Parameter</b>	Pixel Configuration	DIP570
	Pixel Pitch (mm)	10.4x13.8
	Pixel matrix per panel	18x144
	Pixel density (pixels/sq.m.)	6912
	Cabinet Dimensions (LxWxH)/ (mm)	250x1500x70
	Module Dimensions (LxWxH)/ (mm)	\
	Transparency Rate	≥15%
	Panel material	Aluminum profile
	Cabinet weight (kg/panel)	9.6
	Module weight (kg/panel)	\
<b>Electronic Parameter</b>	Color Grayscale (Bit)	14-16bit
	Gray Scale per Color (level)	16384
	Refresh Rate (Hz)	3840
	Driving Type	1/2
	Signal Transmission Distance (m)	CAT5 cable: <100 m; Single mode fiber: <10 km
<b>Optical Parameter</b>	Brightness (nit)	8000/6000
	Optimal Horizontal Viewing Angle (°)	110
	Optimal Vertical Viewing Angle (°)	55
<b>Electrical Parameter</b>	AC Input Voltage (V)	AC: 100-240V±10%
	AC Input Frequency (Hz)	50-60
	AC Input Power Maximum Value (W/m <sup>2</sup> )	560/440
	AC Input Power Typical Value (W/m <sup>2</sup> )	187/148
<b>Circumstance Parameter</b>	Storage Temperature (°C)	-40 -70
	Working Temperature (°C)	-40-50
	IP rating (Front/Rear)	IP66/IP66
	Storage Humidity (RH)	10%~90%
	Working Humidity (RH)	10%~90%
	Lifetime Typical Value (hrs)	100000
<b>Installation Type</b>	Cabinet installation type	Fix
	Rigging Quantity (Vertical) (PCS)	\

If the parameter variation causing by product upgrades, all interpretation right belongs to Kingaurora.



# B1013 dimensional drawing





## B1013 pictures

